

# AMALIE

Better than it has to be<sup>®</sup>  
Since 1903



## PRC HIGH PERFORMANCE

# SYNTHETIC BLEND

# SAE 5W-20

## MOTOR OIL

API: SP, SN/SN Plus, ILSAC GF-6A

### BENEFITS:

- » Extended Engine Protection in Severe Operating Conditions
- » LSPI (Low Speed Pre-Ignition) Protection Throughout the Drain Interval
- » Reduced Oil Thickening & Consumption
- » Superior Wear Protection
- » Enhanced Deposit Control and Engine Cleanliness



For Gasoline and Diesel Engines

MADE IN U.S.A.



Better than it has to be<sup>®</sup>  
Since 1903



SYNTHETIC BLEND



**AMALIE PRO High Performance Synthetic Blend 5W-20** is formulated to exceed the latest API SP and ILSAC GF-6A engine oil categories. A blend of high viscosity index oils, synthetic base stocks, shear stable viscosity modifiers and the latest additive technology, it is specifically formulated for the rigorous environment of gas-direct engine (GDI) and turbo gas-direct engine (TGDI) designs as well as providing increased protection for carbureted or normally fuel injected engines. **AMALIE PRO High Performance Synthetic Blend 5W-20** offers improved performance for wear control, oxidative stability, piston cleanliness, and chain wear over previous API and ILSAC oil categories as well as conventionally formulated oils.

Always consult your vehicle's owner's manual when selecting the appropriate viscosity and service grade.

## TYPICAL PHYSICAL AND CHEMICAL PROPERTIES

|  |           |
|--|-----------|
| Viscosity Grade.....                       | SAE 5W-20 |
| Kinematic Viscosity @100°C, cSt.....       | 8.5       |
| Kinematic Viscosity @40°C, cSt.....        | 49.1      |
| Viscosity Index.....                       | 150       |
| Cold Cranking Viscosity, cP @ (-30°C)..... | .6200     |
| Flash Point, °C (°F).....                  | 223 (433) |
| Pour Point, °C (°F).....                   | -36 (-33) |
| Density, S.G.....                          | 0.863     |
| MRV, cP @ (-35°C).....                     | 20,000    |

Typical values are listed. Variations not affecting the performance of this fluid may occur during production; however, these variations will not fall outside of set specification parameters.

Please consult AMALIE Technical Services or your local representative for a full listing of applications.

Technical Services: • (800) 368-1264 • [techservices@amalie.com](mailto:techservices@amalie.com)

### PRO HIGH PERFORMANCE SYNTHETIC BLEND RESOURCE CONSERVING

| VISCOSITY | PACK SIZE  | PART #       |
|-----------|------------|--------------|
| 5W-20     | 12-1 Quart | 160-75646-56 |
|           | 4-1 Gallon | 160-75647-36 |

## APPLICATION CHART

| SPECIFICATIONS   | Pro High Performance Synthetic Blend SAE 5W-20 |
|--|--|
| API: SP, SN / SN Plus, SM/CF and all previous categories | ✓  |
| ILSAC: GF-6A and all previous categories                 | ✓  |
| Chrysler MS-6395   | ✓  |
| GM 6094M   | ✓  |
| Ford WSS-M2C960-A  | ✓  |
| Hyundai (where 5W-20 is specified)                       | ✓  |
| Honda (where 5W-20 is specified)                         | ✓  |
| Nissan (where 5W-20 is specified)                        | ✓  |
| Toyota (where 5W-20 is specified)                        | ✓  |
| Kia (where 5W-20 is specified)                           | ✓  |

Always refer to your vehicles operating manual to select the correct grade of oil for your engine. The data presented herein are believed to be accurate; however, Amalie Oil Company shall not be liable for its content and makes no warranty with respect thereto.

### Health and Safety

Safety Data Sheets (SDS) are available from your sales representative or at [AMALIE.com](http://AMALIE.com).





# ADVANCED ENGINES REQUIRE ADVANCED MOTOR OILS.

API SP/ILSAC GF-6 is a significant category upgrade. AMALIE Motor Oils have been tried and tested against 7 new tests to ensure modern and next generation engines are protected so that they can perform to their full potential.

For the first time ever, the ILSAC category is split into two:

### 7 NEW TESTS

- Fuel Economy GF-6A/GF-6B
- LSPI
- Chain Wear
- Sludge/Varnish
- Oxidation/Deposits
- Wear
- Corrosion



**ILSAC GF-6A**  
Replaces the ILSAC GF-5 specification and is represented by the starburst/certification trademark.



**ILSAC GF-6B**  
Provides further fuel economy benefits compared to ILSAC GF-6A and is defined for 0W-16 viscosity grade motor oils only.



Better than it has to be®  
Since 1903

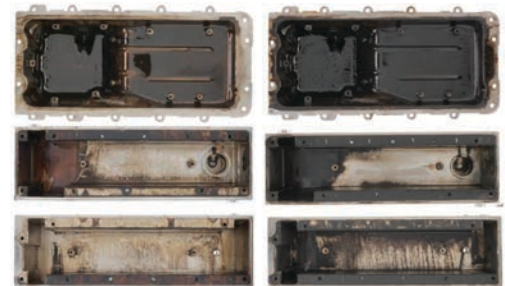
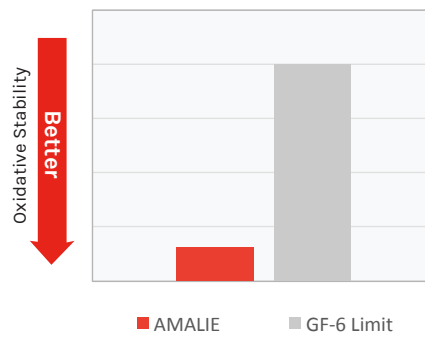
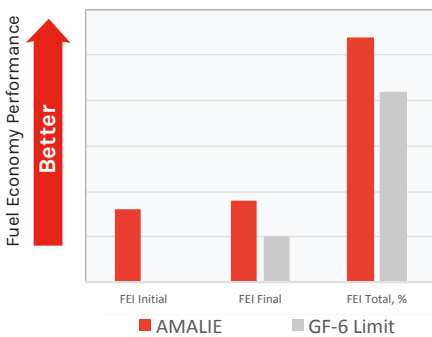


## AMALIE MOTOR OIL SP PRODUCT LINE

Built on the same proven and trusted approach to low speed pre-ignition (LSPI) protection AMALIE introduced in the 2017 API SN PLUS upgrade. In addition, API SP brings additional enhanced benefits in engine protection and ILSAC GF-6 enables better fuel economy performance.

Available in a full range of viscosity grades from mineral to synthetic, including GM dexos<sup>™</sup> Gen 3 and high mileage options.

## AMALIE MOTOR OILS – PROOF OF PERFORMANCE



AMALIE GF-6 Motor Oil Technology

Traditional GF-5 Motor Oil Technology

### Greater Vehicle Efficiency

AMALIE Motor Oils exceed the stringent requirements for fuel efficiency to ensure consumers continue to minimize consumption all the way to their next oil change.

### Reduced Oil Thickening

AMALIE Motor Oils resist thermal breakdown to protect the motor oil from thickening, allowing for oil to be pumped throughout the engine to ensure protection throughout the oil drain interval.

### Enhanced Engine Cleanliness

AMALIE Motor Oils maintain engine cleanliness to ensure critical engine and turbocharged GDI components operate as intended even in extreme operating conditions.



AMALIE GF-6 Motor Oil Technology



Traditional GF-5 Motor Oil Technology

### Improved Wear Control

AMALIE Motor Oils mitigate catastrophic piston damage caused by LSPI and minimize engine wear to ensure efficient and reliable operation to help extend the useful life of the vehicle.



Better than it has to be  
Since 1903

Please visit [AMALIE.com](http://AMALIE.com)  
or call 800-368-1264 for  
more information.