

AMALIE

Better than it has to be®
Since 1903



ELIXIR

FULL SYNTHETIC

SAE 5W-20

MOTOR OIL

API: SP, SN/SN Plus, ILSAC GF-6A

BENEFITS:

- » Exceptional and Extended Engine Protection in Severe Operating Conditions
- » LSPI (Low Speed Pre-Ignition) Protection Throughout the Drain Interval
- » GPF (Gas Particulate Filter) Compatible
- » Reduced Oil Thickening & Consumption
- » Proven Turbo and Super Charger Protection
- » Ultimate Deposit Control and Engine Cleanliness



For Gasoline and Diesel Engines

MADE IN U.S.A.



Better than it has to be[®]
Since 1903



FULL SYNTHETIC



AMALIE Elixir Full Synthetic 5W-20 is a full synthetic motor oil blended with high quality synthetic base stocks, a shear stable viscosity modifier, and the latest additive technology to provide the ultimate protection & performance for a wide range of vehicle demands. Specifically formulated for the rigorous environment of gas-direct engine (GDI) and turbo gas-direct engine (TGDI) designs as well as providing increased protection for carbureted or normally fuel injected engines. It contains additive technology designed to prevent low-speed pre-ignition (LSPI). LSPI can lead to pre-mature engine failure and is a major concern of engine manufacturers. **AMALIE Elixir Full Synthetic 5W-20** is formulated to exceed the latest API SP and ILSAC GF-6A engine oil categories. It delivers superior performance for wear control, deposit control, oxidative stability, piston cleanliness, and timing chain wear over previous API and ILSAC oil categories as well as conventional and synthetic blend oils.

Always consult your vehicle's owner's manual when selecting the appropriate viscosity and service grade.

TYPICAL PHYSICAL AND CHEMICAL PROPERTIES

Viscosity Grade.....	SAE 5W-20
Kinematic Viscosity @100°C, cSt.....	8.5
Kinematic Viscosity @40°C, cSt.....	47.5
Viscosity Index.....	157
Cold Cranking Viscosity, cP @ (-30°C).....	5500
Flash Point, °C (°F).....	233 (451)
Pour Point, °C (°F).....	-42 (-43)
HT/HS Viscosity, cP.....	3.1
TBN, mgKOH/g.....	7.2
Noack Volatility, %weight loss.....	<11.5

Typical values are listed. Variations not affecting the performance of this fluid may occur during production; however, these variations will not fall outside of set specification parameters.

Please consult AMALIE Technical Services or your local representative for a full listing of applications.

Technical Services: • (800) 368-1264 • techservices@amalie.com

ELIXIR FULL SYNTHETIC RESOURCE CONSERVING

VISCOSITY	PACK SIZE	PART #
5W-20	12-1 Quart	160-75746-56
	4-1 Gallon	160-75747-36
	6 Gallon	160-75740-21
	55 Gallon	160-75743-05

Always refer to your vehicles operating manual to select the correct grade of oil for your engine. The data presented herein are believed to be accurate; however, Amalie Oil Company shall not be liable for its content and makes no warranty with respect thereto.

Health and Safety

Safety Data Sheets (SDS) are available from your sales representative or at AMALIE.com.

APPLICATION CHART

SPECIFICATIONS	Elixir Full Synthetic SAE 5W-20
API	
SP, SN / SN Plus, SM, SL, SJ	✓
CF	✓
ILSAC:	
GF-6A, GF-5, GF-4	✓
ACEA: See Note Below	
C5	*
Ford:	
M2C 960 A	✓
M2C 945	✓
M2C 930 A (M2C 153H)	✓
DaimlerChrysler:	
MS 6395K	✓
General Motors:	
GM 4718M, GM 6094M	✓
Toyota (where 5W-20 is specified)	✓
Hyundai (where 5W-20 is specified)	✓
Kia (where 5W-20 is specified)	✓
Nissan (where 5W-20 is specified)	✓
CID AA-52039	✓
Mil-L-2104-B	✓
Mil-L-46152	✓

*Suitable for use

Note: ACEA sequences and some OEM specifications are viscosity specific. Please consult your representative.



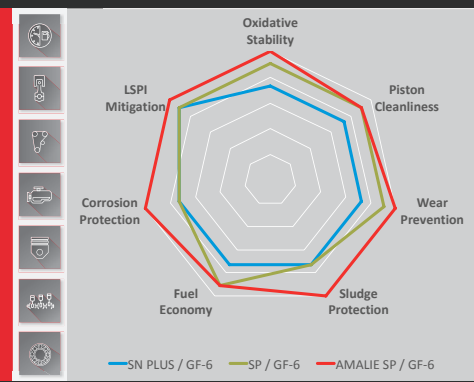
ADVANCED ENGINES REQUIRE ADVANCED MOTOR OILS.

API SP/ILSAC GF-6 is a significant category upgrade. AMALIE Motor Oils have been tried and tested against 7 new tests to ensure modern and next generation engines are protected so that they can perform to their full potential.

For the first time ever, the ILSAC category is split into two:

7 NEW TESTS

- Fuel Economy GF-6A/GF-6B
- LSPI
- Chain Wear
- Sludge/Varnish
- Oxidation/Deposits
- Wear
- Corrosion



ILSAC GF-6A

Replaces the ILSAC GF-5 specification and is represented by the starburst/certification trademark.



ILSAC GF-6B

Provides further fuel economy benefits compared to ILSAC GF-6A and is defined for 0W-16 viscosity grade motor oils only.



Better than it has to be®
Since 1903

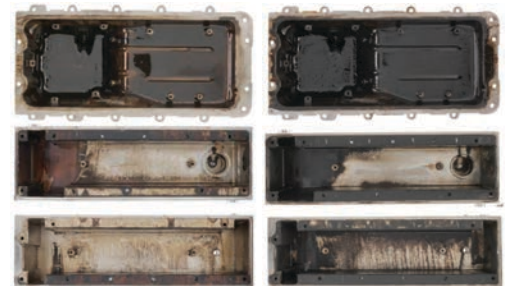
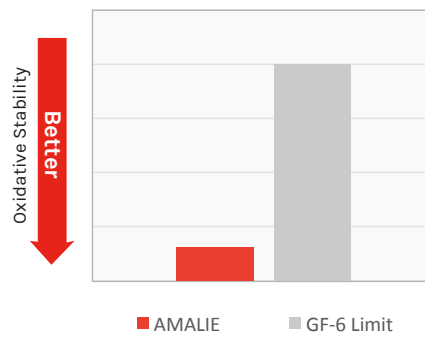
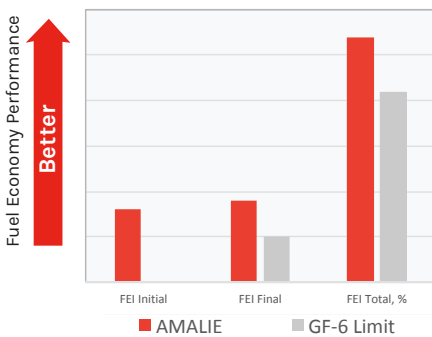


AMALIE MOTOR OIL SP PRODUCT LINE

Built on the same proven and trusted approach to low speed pre-ignition (LSPI) protection AMALIE introduced in the 2017 API SN PLUS upgrade. In addition, API SP brings additional enhanced benefits in engine protection and ILSAC GF-6 enables better fuel economy performance.

Available in a full range of viscosity grades from mineral to synthetic, including GM dexos[™] Gen 3 and high mileage options.

AMALIE MOTOR OILS – PROOF OF PERFORMANCE



AMALIE GF-6 Motor Oil Technology

Traditional GF-5 Motor Oil Technology

Greater Vehicle Efficiency

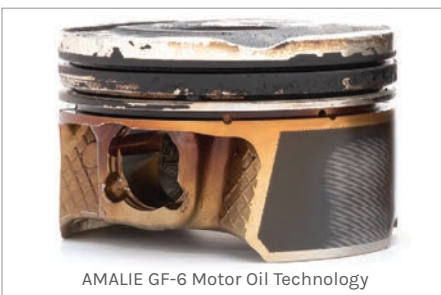
AMALIE Motor Oils exceed the stringent requirements for fuel efficiency to ensure consumers continue to minimize consumption all the way to their next oil change.

Reduced Oil Thickening

AMALIE Motor Oils resist thermal breakdown to protect the motor oil from thickening, allowing for oil to be pumped throughout the engine to ensure protection throughout the oil drain interval.

Enhanced Engine Cleanliness

AMALIE Motor Oils maintain engine cleanliness to ensure critical engine and turbocharged GDI components operate as intended even in extreme operating conditions.



AMALIE GF-6 Motor Oil Technology



Traditional GF-5 Motor Oil Technology

Improved Wear Control

AMALIE Motor Oils mitigate catastrophic piston damage caused by LSPI and minimize engine wear to ensure efficient and reliable operation to help extend the useful life of the vehicle.



Better than it has to be
Since 1903

Please visit AMALIE.com
or call 800-368-1264 for
more information.